



MONTHLY MEMBERSHIP PROGRESS REPORT

Results as of: 5/31/2015

Multiple District 324

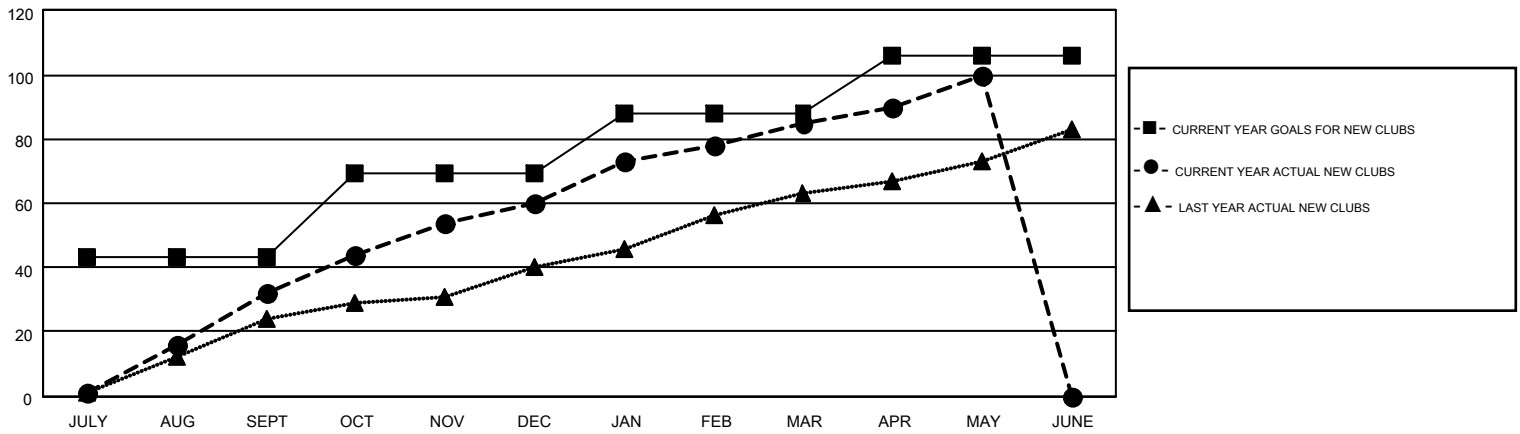
LOCATION: INDIA

GMT: ER GURUNATHAN

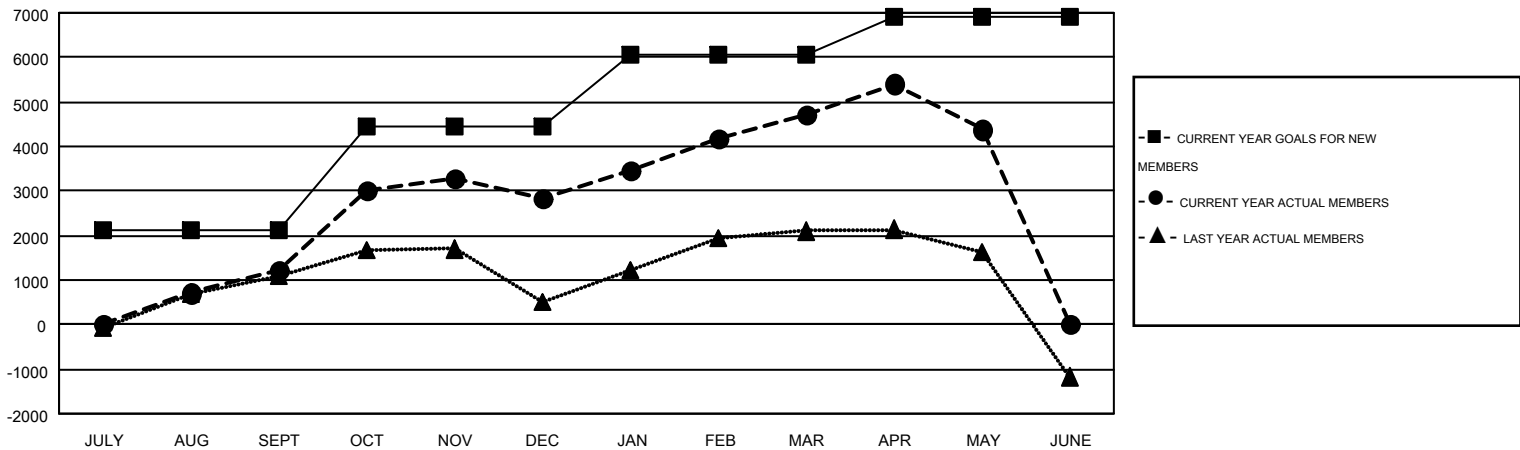
GMT CA 6

| Clubs | | | | | Members | | | | |
|-----------------------|---------------|-----------|---------------|---------------|-----------------------|-----------------|-------------------------------|-----------------|---------------|
| RESULTS FOR 2014-2015 | | | | | RESULTS FOR 2014-2015 | | | | |
| QUARTER | NEW CLUB GOAL | NEW CLUBS | DROPPED CLUBS | NET GAIN/LOSS | QUARTER | NEW MEMBER GOAL | CHARTER AND NEW MEMBERS ADDED | DROPPED MEMBERS | NET GAIN/LOSS |
| JULY/AUG/SEPT | 43 | 32 | 7 | 25 | JULY/AUG/SEPT | 2,125 | 3,055 | 1,814 | 1,241 |
| OCT/NOV/DEC | 26 | 28 | 27 | 1 | OCT/NOV/DEC | 2,315 | 3,198 | 1,594 | 1,604 |
| JAN/FEB/MAR | 19 | 25 | 16 | 9 | JAN/FEB/MAR | 1,635 | 2,868 | 1,007 | 1,861 |
| APR/MAY/JUNE | 18 | 15 | 3 | 12 | APR/MAY/JUNE | 850 | 1,972 | 2,297 | -325 |

GOALS AND ACTUAL NEW CLUBS CUMULATIVE



GOALS AND ACTUAL MEMBERS CUMULATIVE



| | | |
|------------------------|---|-----------------------------------|
| DROPPED CLUBS: 53 | 1109 CLUBS OF 1425 ADDED 1 OR MORE NEW MEMBERS | GENDER DISTRIBUTION |
| | | MALE 44,391 (80.17%) |
| | | FEMALE 10,980 (19.83%) |
| DROPPED MEMBERS | CLICK HERE FOR HEALTH ASSESSMENT DATA | FAMILY UNIT MEMBERS 18,133 |
| DECEASED 137 | | HEAD OF HOUSEHOLD 7,730 |
| CLUB CANCELLED 939 | | NON-HEAD OF HOUSEHOLD 10,403 |
| OTHER 5,636 | | |
| TOTAL 6,712 | | |